


ARE YOU READY TO BE KNIGHTED?





Company Introduction	06
Vehicle Specifications	08
Standard Interior Appointments	10
Standard Exterior Appointments/Standard Security Appointments	11
Armoring Information	12
Engine Options/Compliance & Chassis.....	15
Additional Vehicle Information	16
Entertainment Packages	18
Luxury Group	22
Security Group	24
Stand Alone Upgrades/Custom Accents	27
Vehicle Ordering Process	28

COMPANY INTRODUCTION.

Conquest Vehicles Inc., specializes in the design and manufacturing of bespoke, ultra luxurious, fully armored, sport utility vehicles.

Headquartered in Toronto, Canada, Conquest Vehicles is comprised of the automotive industry's most respected talent whose award-winning experience in engineering, fabrication, design, armoring and customization combine to create one-of-a-kind vehicles unrivaled and unmatched in today's security and luxury automotive marketplace.

In 2008, Conquest Vehicles introduced its flagship vehicle, the KNIGHT XV. Defining security, luxury and excellence in the 21st century, the KNIGHT XV, which takes over 4,000 hours to hand craft, offers discriminate buyers more options, amenities and upgrades than any other luxury armored vehicle in today's marketplace while promising an unrivaled ownership experience.

Conquest Vehicles believes that there should never be compromise when it comes to acquiring a bespoke armored luxury vehicle. There should only be the KNIGHT XV.





VEHICLE SPECS.

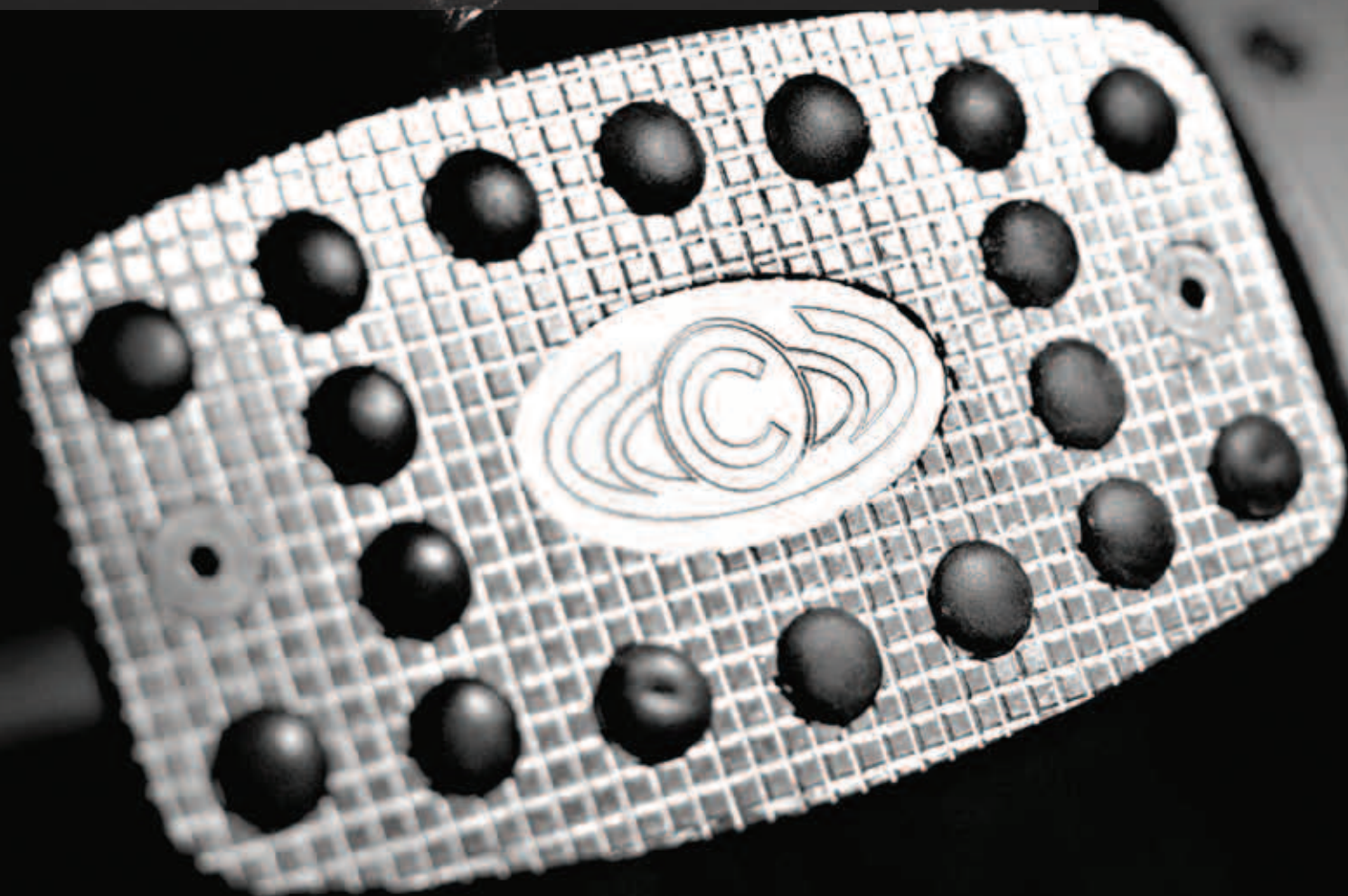
WEIGHT	13,000 lbs (5,896.07 kg) approximately
WHEELBASE	145" (3683 mm)
HEIGHT	100" (2540 mm)
LENGTH	235" (6000 mm)
WIDTH	96" (2438 mm)
GROUND CLEARANCE	14" (355.6 mm) approximately
GVWR	19,500 lbs (8846 kg)
4x4	Electronic, push button 4WD or floor shift
ENGINE	Gasoline Engine: Ford 6.8L, V10 Diesel Engine: Ford 6.7L Power Stroke, V8 Turbo diesel engine
HORSE POWER	Gasoline Engine: 362hp, 462 lbs torque Diesel Engine: 300hp, 660 lbs torque
TRANSMISSION	5-speed TorqShift automatic
CHASSIS	Ford F550 Super Duty platform chassis upgraded to our specifications
WHEELS	MPT Continental tires 335/80 R20 MPT81
FUEL	Gasoline or Diesel
FUEL CAPACITY	63 gallons/238 liters (a larger fuel tank is also available as an upgrade)
STEERING	Power steering
BRAKES	4 wheel disc with ABS
AIR CONDITIONING	2 units: Factory AC in-front cabin with auxiliary AC unit in rear





STANDARD INTERIOR APPOINTMENTS.

CARPETING	Wilton Wool luxury carpeting
UPHOLSTERY & SEATING	6 way electric conference and cabin seating, total 6 passengers, in hand crafted Andrew Muirhead leather
FINISH	Ultra Suede finish throughout
POWER CONVENIENCE	Power operated driver and passenger front windows
CABIN	340-cubic feet
SUNROOF	Tandem sunroof glass
LIGHTING	Interior lighting, map/courtesy and ambient
AUDIO	Alpine AM, FM, CD, DVD Navigation and Bluetooth equipment
VIDEO	Dual screen dashboard and rear console (remote controlled inputs)
NIGHTVISION	PathfindIR Thermal Imaging Camera (front and back) with rear back up camera system FLIR PathFindIR is standard equipment on all KNIGHT XV vehicles sold in North America



STANDARD EXTERIOR APPOINTMENTS.

RUNNING BOARDS	Stainless steel side mounted
RIMS	KNIGHT XV 20" Polished custom rims, forged from 6061 Aluminum
TIRES	MPT Continental tires 335/80 R20 MPT81
LIGHTS	Fascia mounted PIAA dual mode fog and driving lamps
SEARCH LIGHTS	306° Roof mounted dual search spot lights, joystick remote controlled
ANTENNA	Rear mounted
GRILLE	Armored
AIR RIDE SUSPENSION	Front and rear commercial grade air ride suspension providing cabin controlled adjustability for ride comfort or load handling

STANDARD SECURITY APPOINTMENTS.

FLIR night vision cameras mounted front and rear
Roof mounted rear view camera
Keyless entry system
Transparent, tinted, armor glass throughout
Tandem tinted moon roof panels (transparent armor)
Hutchinson Ballistic run flat system on all tires
Passive anti theft key system

ARMORING INFORMATION.

The KNIGHT XV's armoring level varies based on each client's specific requirements. Transparent Armor – The ballistic glass used in the KNIGHT XV is produced by a leading manufacturer of ballistic transparencies. Our team of designers and engineers work closely with the manufacturers of ballistic transparencies to ensure the glass module meets the required protection and tint level. In addition, we ensure that the glass meets the requirements of our overlap armoring technique when it is combined with the installation of the opaque armor.

Opaque Armor – Only the highest quality high-strength steel, ballistic aluminum, composites aramid and ceramics are used in the manufacturing of the KNIGHT XV's opaque armor.

Firewall (wall between engine and passenger compartment)
– The KNIGHT XV armor offers a protective firewall.

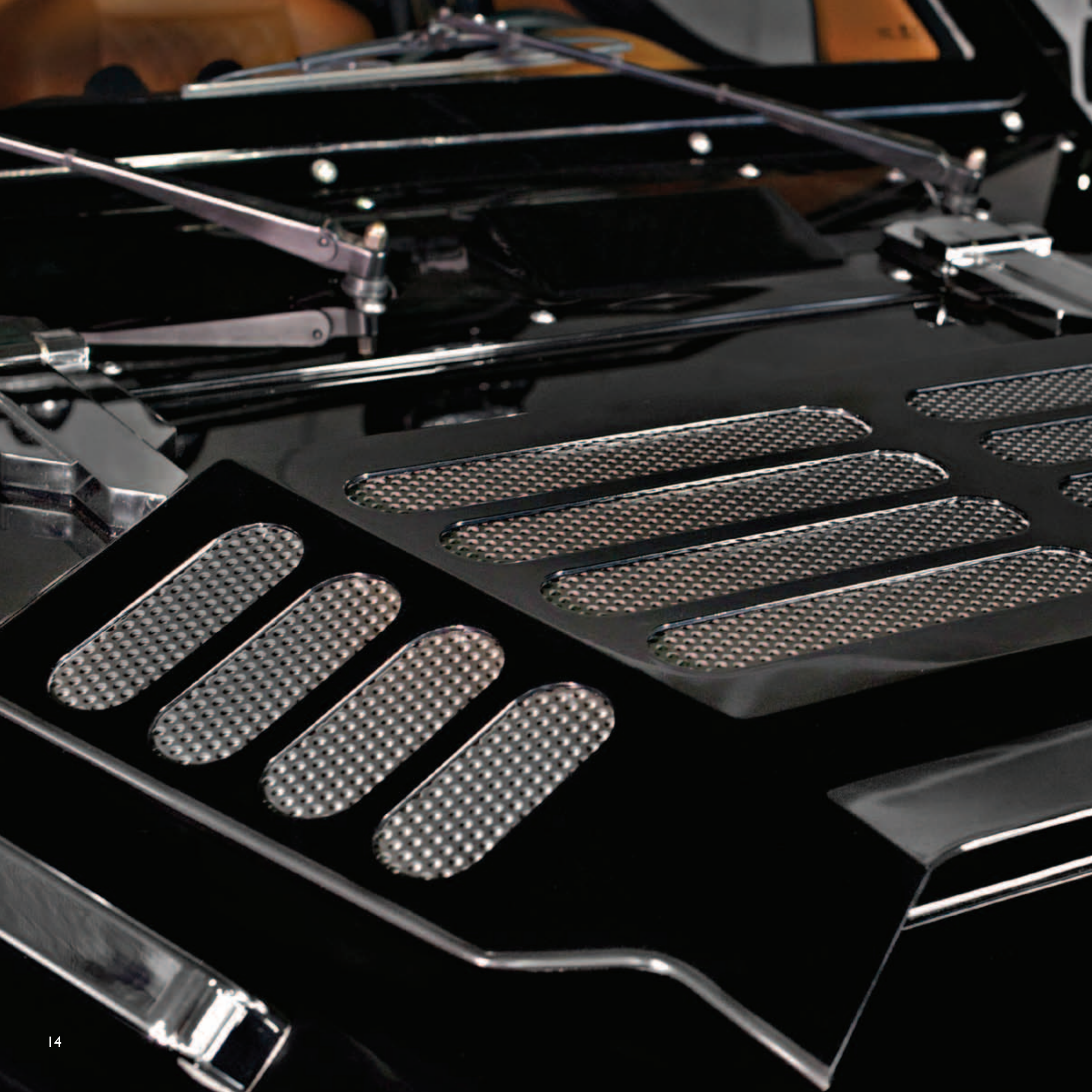
Doors – Due to the added weight of the transparent and opaque armor in the doors, the door hinges are reinforced using a proprietary system to completely avoid hinge failure and prevent sheet metal fatigue around the hinge system.

Armoring Certification – All armoring materials on the KNIGHT XV have been H.P. White Laboratory Inc. certified. For detailed armoring information, please contact a Conquest Vehicles' consultant.





KNIGHT XV





ENGINE OPTIONS.

OPTION 1

GAS ENGINE PACKAGE - STANDARD

This includes a Ford 6.8L, V10

A Flex Fuel conversion package is available for the Gas Engine. This Upgrade Option adds an E-85 Ethanol Conversion System - This will make the vehicle a 'Flexible Fuel Vehicle' (FFV) with the engine capable to run on high-octane gasoline or a blend of up to 85% ethanol (E85).

OPTION 2

DIESEL ENGINE PACKAGE

This includes a Ford 6.7L Power Stroke V8 turbo diesel engine.

COMPLIANCE & CHASSIS.

KNIGHT XV CHASSIS

The KNIGHT XV is built on a Super duty Ford modified F550 commercial platform.

KNIGHT XV COMPLIANCE

Conquest Vehicles builds each KNIGHT XV in compliance with the U.S. DOT (Department Of Transportation) guidelines.

ADDITIONAL VEHICLE INFORMATION.

BASE PRICE \$629,000

KNIGHT XV PRODUCTION TIME

Once your build allocation slot has been established it will take approximately (9 months) to complete your KNIGHT XV vehicle order. The allocation of the build slot may vary according to the production schedule at that particular time.

Your Conquest Vehicles' consultant will be in constant contact with you throughout your KNIGHT XV build to provide regular updates on the progress of your vehicle including updated photos as well as projected completion date.

KNIGHT XV STANDARD SEATING CONFIGURATION

The standard seating configuration for the KNIGHT XV consists of a total of 6 seats (2 in the front and 4 in the rear). The 4 seats in the rear are a limousine style configuration with 2 seats facing forward and 2 seats facing backward.

KNIGHT XV CONTACT US

Conquest Vehicles Inc.

Toronto Canada

416.454.3260

info@conquestvehicles.com

conquestvehicles.com





KNIGHT XV UPGRADE PACKAGES







LUXURY GROUP.

Electrostatic Tinting – With the push of a button, users control the amount of light and heat passing through the glass changing it from transparent to translucent.

Rear Power Window – Option provides power operation of ballistic transparencies in rear cabin.

Retractable ballistic glass partition – Power operated partition provides additional security between the rear cabin and cockpit.

Retractable flat screen television (deletes 2 seats) – A 27” retractable flat screen LCD television replaces the two rear facing passenger seats.

Siren, 2-way PA system with loudspeaker – A driver-accessible audible warning device and public address system built into the vehicle.

Hidden front VIP strobes lights – An active visual warning system built into the vehicle’s fascia below the grille.

Forward and backup sensors – Audible proximity detectors embedded in the front and rear bumpers.

External intercom communication system-enables passenger and driver to communicate with individuals outside the vehicle without opening window

Playstation3 or X-Box entertainment system –Multimedia entertainment system located in rear cabin for easy access.

VIP PACKAGE - Decanter bar, cooler box, cigar humidor – Special luxury package designed exclusively by Conquest Vehicles for the Knight XV.





SECURITY GROUP.

Under vehicle explosive protection system – Opaque floor armor protection upgraded to minimize effects of under vehicle explosion.

Under vehicle magnetic attachment detector –The bomb detector is designed to give the user a warning if a magnetically attached explosive device is concealed under the vehicle.

Black box - a live video and telemetry recording and wireless transmission unit (real-time) specially designed for vehicular usage.

Security safe – A fire-resistant secure lockable box concealed within the vehicle.



Fire extinguisher – Active fire protection device used to extinguish or control small fires in emergency situations.

Exterior surveillance camera system – Four discrete body mounted cameras accessible remotely via laptop or PDA.

Positive pressure defense system against gas attacks – A vehicle filter protection system as positive pressure ventilation system offers protection against tear (CN/CS) as well as solid, liquid and gases contaminants in the breathing air.

Oxygen Survival Kit – NIOSH certified escape mask kit with 30-minute general category escape mask (inside front and rear compartment).



Size Comparison: KNIGHT XV™ vs Hummer H2™



STAND ALONE UPGRADES.

Optional Seating Upgrade (2 rear front facing seats)

- Handcrafted recliner/sleeper first class style seats

Right Hand Drive Conversion Kit

- Direct adaptation from left to right drive sides

TracVision Satellite Dish System

- Provides satellite television while driving. Requires account set-up by owner

Exotic Wood or Carbon Fiber Accents

Vehicle Armor Upgrade to Euronorm B7

- Quote available upon request

EMP

- Electromagnetic pulse defense system

CUSTOM ACCENTS.



Zebra wood



Walnut



Carbon Fiber



Black Lacquer

VEHICLE ORDERING PROCESS.

STEP 1

PRODUCTION RESERVATION ORDER & DEPOSIT

To place your order, a Production Reservation Order Form must be filled out in order to reserve a production spot for your vehicle. Upon receipt of your Production Reservation Order Form, Conquest Vehicles will issue your official KNIGHT XV production number.

With your Production Reservation Order form, Conquest Vehicles requires a (U.S.) \$25,000 deposit to secure your KNIGHT XV production spot.

STEP 2

TAILORING CONSULTATION

A Conquest Vehicles' consultant will contact you within 24 hours after receiving your reservation order and deposit to discuss the tailoring of your KNIGHT XV with additional upgrade options. Conquest Vehicles has several upgrade option packages to choose from and if you don't see something on our list that you still want, we will source it on your behalf.



STEP 3

VEHICLE PURCHASE AND SALE AGREEMENT

Now that you have decided on your upgrades for your KNIGHT XV, Conquest Vehicles will then complete a Vehicle Purchase and Sale Agreement that will be sent to you for review and signature. The agreement outlines your KNIGHT XV purchase with final pricing included. At this point Conquest Vehicles will require a 50% deposit via wire transfer (less the \$25,000 deposit which has already been received). The pricing of your KNIGHT XV does not include shipping costs.

STEP 4

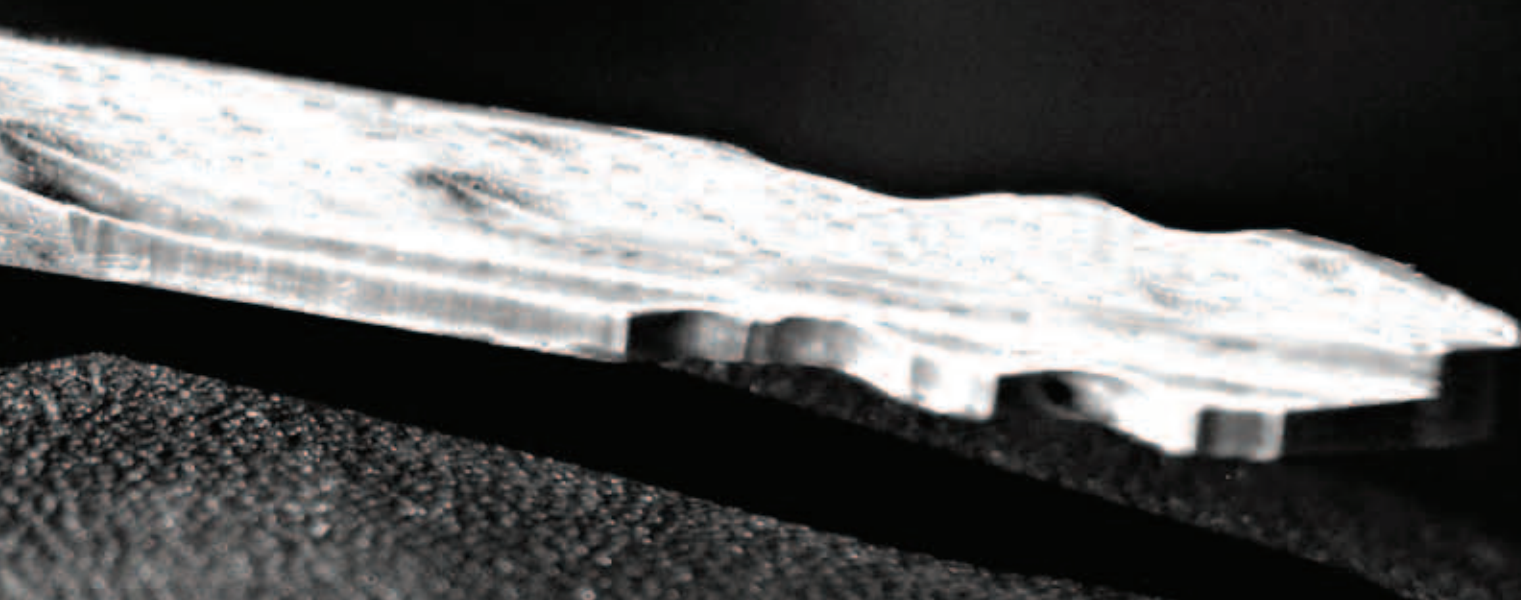
BALANCE FULFILLMENT & SHIPPING

Your remaining 50% balance payment will be required upon Conquest Vehicles completing production of your KNIGHT XV. Upon completion, a consultant from Conquest Vehicles will contact you to inform you that the vehicle is ready and will assist you with completing the final payment process. At this time, a Conquest Vehicles' consultant will also discuss your shipping options and preferences.

PRODUCTION FACILITY VISIT

Knowing the excitement that comes with acquiring a KNIGHT XV, we invite you to make an appointment to come visit our production facility in Toronto, Canada, while your KNIGHT XV is being built. You will have the opportunity to see your vehicle on the production floor being built and to engage with our skilled team of builders while touring our facility.

ALL PRICING IS IN U.S. DOLLARS





CONQUEST

Conquest Vehicles Inc.

Toronto Canada

416.454.3260

info@conquestvehicles.com

conquestvehicles.com

